

Accurate Institute of Management & Technology, Gr. Noida

MANDATORY DISCLOSURE 2010

| | |
|----------------------|---------------------------------------------------------------------------------------------|
| Mandatory Disclosure | |
| 1 | AICTE File No. 06/06/UP/ENGG/2006 |
| | Date & Period of last approval 30.06.2009 |
| 2 | Name of the Institution Accurate Institute of Management & Technology |
| | Address of the Institution 49, Knowledge Park-III |
| | City & Pin Code Greater Noida – 201 306 |
| | State / UT Uttar Pradesh |
| | Longitude & Latitude 28.40 North and 77.28 East |
| | Phone number with STD code 0120-2328234, 2328235 |
| | FAX number with STD code 0120- 2320355 |
| | Office hours at the Institution 9 Hours |
| | Academic hours at the Institution 7.5 Hours |
| | Email accuratemail@gmail.com |
| | Website www.accurate.in |
| | Nearest Railway Station (dist in Km) Ghaziabad (40 Kms.) |
| | Nearest Airport (dist in Km) New Delhi (55 Kms.) |
| 3 | Govt./Govt.-aided/University Dept./Deemed Univ./ Private-Self Financed |
| | Category (1) of the Institution Non Minority/Minority Specify Minority: |
| | Category (2) of the Institution Co-Ed/ Women Only |
| 4 | Name of the organization running the Institution Accurate Education & Research Society |
| | Type of the organization Society |
| | Address of the organization C-187, Surya Nagar, Ghaziabad |
| | Registered with Sub Registrar, Societies, Firms & Chits, Meerut |
| | Registration date 04.03.2005 |
| | Website of the organization www.accurate.in |
| 5 | Name of the affiliating University Uttar Pradesh Technical University |
| | Address I.E.T. Campus, Sitapur Raod, Lucknow |
| | Website www.uptu.ac.in |
| | Latest Affiliation period 2009-2010 |

6 Name of the Principal/Director **Dr. R.N. Singh**
 Exact Designation Director
 Phone number with STD code 120-2328234
 FAX number with STD code 120-2320355
 Email accuratemail@gmail.com
 Highest Degree Ph.D.
 Field of specialization Civil Engineering

7 Governing Board Members

Frequency of meeting & date of last meeting Board meeting is held in every semester and
 Last meeting on 08.11.2009

Members of the Board of Governors and their brief background

| S. No. | Name | Academic Qualification | | Nature of association with the promoting body | Experience in academic institutions (in year) | | | Overall experience (in years) |
|--------|--------------------|-----------------------------------------|-----------------|-----------------------------------------------|-----------------------------------------------|------------|----------------|-------------------------------|
| | | Technical | Non-Technical | | Promotional | Management | Organizational | |
| 1. | Mr. C. L. Sharma | -- | M. Sc., L.L. B. | Chairman | 1 | 08 | 20 | 29 |
| 2. | Mrs. Pushpa Sharma | -- | M.A. | Vice Chairman | 1 | 12 | 02 | 15 |
| 3. | Mrs. Anupam Sharma | -- | B. Com. (Hons.) | Member | 1 | 05 | 02 | 08 |
| 4. | Ms. Poonam Sharma | MBA | B. Sc.(IT) | Member | 1 | 04 | 02 | 07 |
| 5. | Dr. O.P. Sharma | | | Member | | | | |
| 6 | Mr. Deepak Sharma | MBA | -- | Member | 1 | 04 | 01 | 06 |
| 7. | Ms. Meera Varshnay | | -- | Member | -- | | | |
| 8. | Dr. R.N. Singh | B.Sc. (Engg.) M.Sc. (Engg.) Ph.D. | -- | Member Secretary | -- | -- | 43 | 43 |

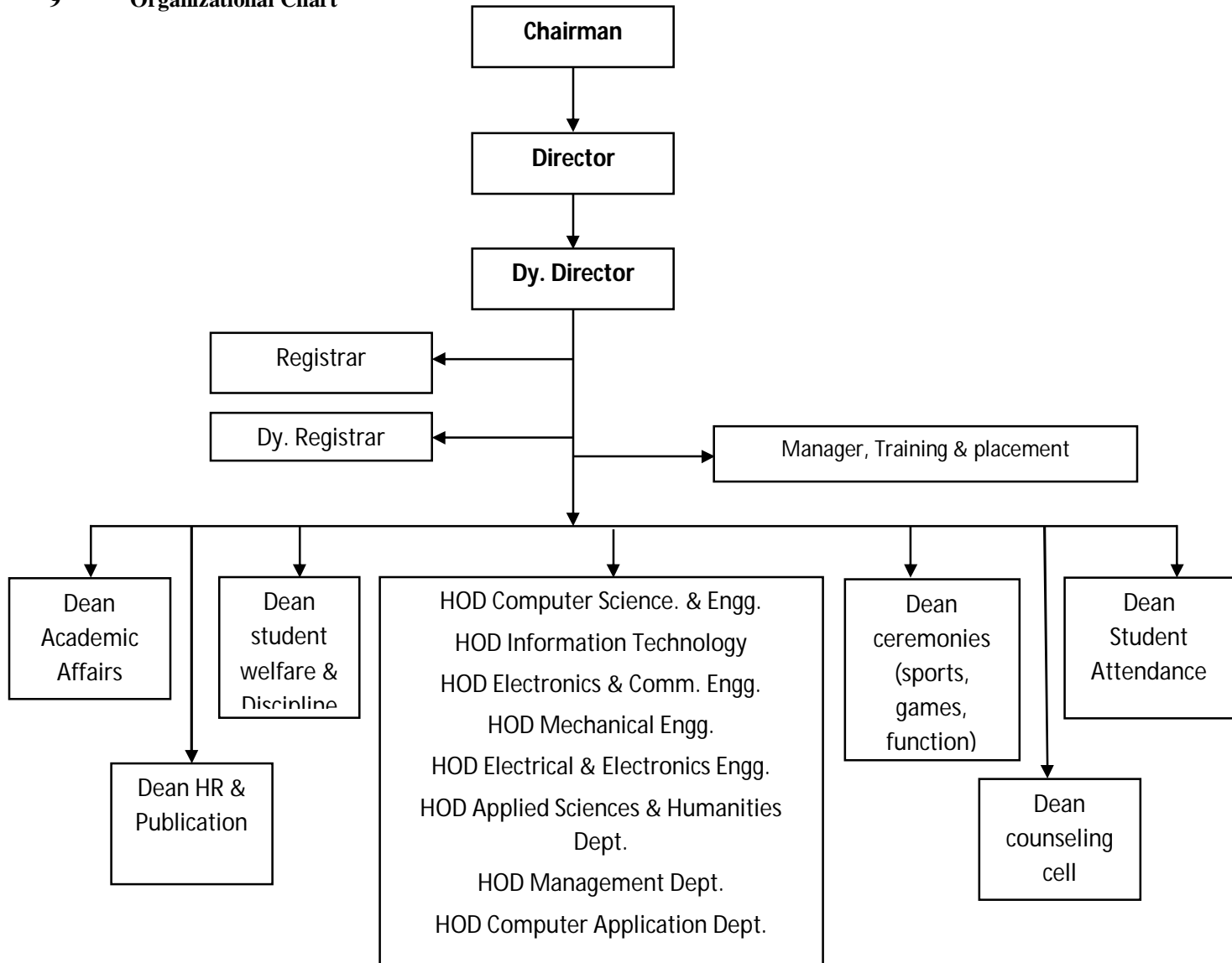
8 Academic Advisory Body

Frequency of meeting & date of last meeting Academic Advisory Body meeting is also held in every Month.
 Last Meeting on 17.03.2010

MEMBERS OF ACADEMIC ADVISORY BODY

| S.No. | Name | Members of Academic Advisory body |
|-------|-------------------------|---------------------------------------------------------------------------------------------|
| 1 | Mr. C. L. Sharma | Chairman |
| 2 | Mrs. Pushpa Sharma | Vice Chairman |
| 3 | Mrs. Anupam Sharma | Member nominated by the registered Society/Trust |
| 4 | Ms. Poonam Sharma | Member nominated by the registered Society/Trust |
| 5 | Mr. Raghvendra Varshney | A reputed Industrialist |
| 6 | Mr. M. K. Basak | An Eminent Technologist |
| 7 | Mr. Virendra Sharma | An Educationalist/Administrator |
| 8 | Capt. P.K.Sharma | A Parent of Male/Female student to be nominated by Chairman of BOG as rotation of one year. |
| 9 | Mr. Abhishek Singhal | Faculty of the Institute |
| 10 | To be nominated | Council Ministry or Education Govt. of India |
| 11 | Prof. Yogesh Singh | Nominee of the U.P. Technical University |
| 12 | Dr. R.N. Singh | Director of the Institute (Member Secretary) |

9 **Organizational Chart**



- | | | |
|----|----------------------------------------------------------------------------|--------------------------------------------------------------------------------------------------------------------------------------------------------------------------------------------------------------------------------------------------------------|
| 10 | Student feedback mechanism on Institutional governance/faculty performance | The feedback of the faculty members are taken weekly by the Director. Faculty members having poor feedback / average feedback are directed by the Director & Head of the department(s) to improve by suggesting them to adopt modified / new methods. |
| 11 | Grievance redressal mechanism for faculty, staff and students | Grievance of the staff and students are sorted out through mentorship programmes. A group of 20 students is mentored by one faculty member. Academic problems of the students are sorted out by the concerned faculty, H.O.D. and Director of the Institute. |

| | | | | |
|----|-------------------------------------------------|------------------------------------------------------------------------------------------|------------------|------------------|
| 12 | (A) Name of the Department | B.Tech. Computer Science & Engineering | | |
| | Course | B.Tech. | | |
| | Level | UG | | |
| | 1 st Year of approval by the Council | 2006 | | |
| | | 2009-2010 | 2008-2009 | 2007-2008 |
| | Year wise sanctioned Intake | 120 | 120 | 120 |
| | Year wise Actual Admissions | 120 | 120 | 120 |
| | Cut of marks- General quota | 50% | 60% | 60% |
| | % Students passed with Distinction | Not Applicable (Final Year of First Batch is in process) | | |
| | % Students passed with First Class | Not Applicable (Final Year of First Batch is in process) | | |
| | Students Placed | Not Applicable | | |
| | Average Pay package, Rs./Year | Not Applicable | | |
| | Students opted for Higher Studies | Not Applicable (Final Year of First Batch is in process) | | |
| | Accreditation Status of the course | Accredited/ Provisionally Accredited/ Non Accredited/ Not eligible yet | | |
| | Doctoral Course | YES / NO | | |
| | Foreign Collaborations, if any | NIL | | |
| | Professional Society Memberships | Not Applicable | | |
| | Professional activities | Not Applicable | | |
| | Consultancy activities | Not Applicable | | |
| | Grants fetched | NIL | | |
| | Departmental Achievements | Not Applicable | | |
| | Distinguished Alumni | Not Applicable | | |

| | | | | |
|----|-------------------------------------------------|------------------------------------------------------------------------------------------|------------------|------------------|
| 12 | (B) Name of the Department | B.Tech. Information Technology | | |
| | Course | B.Tech. | | |
| | Level | UG | | |
| | 1 st Year of approval by the Council | 2006 | | |
| | | 2009-2010 | 2008-2009 | 2007-2008 |
| | Year wise sanctioned Intake | 120 | 120 | 60 |
| | Year wise Actual Admissions | 91 | 93 | 60 |
| | Cut of marks- General quota | 50% | 60% | 60% |
| | % Students passed with Distinction | Not Applicable (Final Year of First Batch is in process) | | |
| | % Students passed with First Class | Not Applicable (Final Year of First Batch is in process) | | |
| | Students Placed | Not Applicable | | |
| | Average Pay package, Rs./Year | Not Applicable | | |
| | Students opted for Higher Studies | Not Applicable (Final Year of First Batch is in process) | | |
| | Accreditation Status of the course | Accredited/ Provisionally Accredited/ Non Accredited/ Not eligible yet | | |
| | Doctoral Course | YES / NO | | |
| | Foreign Collaborations, if any | NIL | | |

| | | | | |
|----|-------------------------------------------------|------------------------------------------------------------------------------------------|------------------|------------------|
| | Professional Society Memberships | Not Applicable | | |
| | Professional activities | Not Applicable | | |
| | Consultancy activities | Not Applicable | | |
| | Grants fetched | NIL | | |
| | Departmental Achievements | Not Applicable | | |
| | Distinguished Alumni | Not Applicable | | |
| 12 | (C) Name of the Department | B.Tech. Electronics & Communication Engineering | | |
| | Course | B.Tech. | | |
| | Level | UG | | |
| | 1 st Year of approval by the Council | 2006 | | |
| | | 2009-2010 | 2008-2009 | 2007-2008 |
| | Year wise sanctioned Intake | 60 | 60 | 60 |
| | Year wise Actual Admissions | 60 | 60 | 60 |
| | Cut of marks- General quota | 50% | 60% | 60% |
| | % Students passed with Distinction | Not Applicable (Final Year of First Batch is in process) | | |
| | % Students passed with First Class | Not Applicable (Final Year of First Batch is in process) | | |
| | Students Placed | Not Applicable | | |
| | Average Pay package, Rs./Year | Not Applicable | | |
| | Students opted for Higher Studies | Not Applicable (Final Year of First Batch is in process) | | |
| | Accreditation Status of the course | Accredited/ Provisionally Accredited/ Non Accredited/ Not eligible yet | | |
| | Doctoral Course | YES-/ NO | | |
| | Foreign Collaborations, if any | NIL | | |
| | Professional Society Memberships | Not Applicable | | |
| | Professional activities | Not Applicable | | |
| | Consultancy activities | Not Applicable | | |
| | Grants fetched | NIL | | |
| | Departmental Achievements | Not Applicable | | |
| | Distinguished Alumni | Not Applicable | | |
| 12 | (D) Name of the Department | B.Tech. Electrical & Electronics Engineering | | |
| | Course | B.Tech. | | |
| | Level | UG | | |
| | 1 st Year of approval by the Council | 2009 | | |
| | | 2009-2010 | 2008-2009 | 2007-2008 |
| | Year wise sanctioned Intake | 60 | -- | -- |
| | Year wise Actual Admissions | 60 | -- | -- |
| | Cut of marks- General quota | 50% | | |
| | % Students passed with Distinction | Not Applicable (Final Year of First Batch is in process) | | |

| | | | | |
|----|-------------------------------------------------|-----------------------------------------------------------------------------------|------------------|------------------|
| | % Students passed with First Class | Not Applicable (Final Year of First Batch is in process) | | |
| | Students Placed | Not Applicable | | |
| | Average Pay package, Rs./Year | Not Applicable | | |
| | Students opted for Higher Studies | Not Applicable (Final Year of First Batch is in process) | | |
| | Accreditation Status of the course | Accredited/ Provisionally Accredited/ Non Accredited/ Not eligible yet | | |
| | Doctoral Course | YES / NO | | |
| | Foreign Collaborations, if any | NIL | | |
| | Professional Society Memberships | Not Applicable | | |
| | Professional activities | Not Applicable | | |
| | Consultancy activities | Not Applicable | | |
| | Grants fetched | NIL | | |
| | Departmental Achievements | Not Applicable | | |
| | Distinguished Alumni | Not Applicable | | |
| 12 | (E) Name of the Department | B.Tech. Mechanical Engineering | | |
| | Course | B.Tech. | | |
| | Level | UG | | |
| | 1 st Year of approval by the Council | 2006 | | |
| | | 2009-2010 | 2008-2009 | 2007-2008 |
| | Year wise sanctioned Intake | 60 | 60 | 60 |
| | Year wise Actual Admissions | 60 | 60 | 55 |
| | Cut of marks- General quota | 50% | 60% | 60% |
| | % Students passed with Distinction | Not Applicable (Final Year of First Batch is in process) | | |
| | % Students passed with First Class | Not Applicable (Final Year of First Batch is in process) | | |
| | Students Placed | Not Applicable | | |
| | Average Pay package, Rs./Year | Not Applicable | | |
| | Students opted for Higher Studies | Not Applicable (Final Year of First Batch is in process) | | |
| | Accreditation Status of the course | Accredited/ Provisionally Accredited/ Non Accredited/ Not eligible yet | | |
| | Doctoral Course | YES / NO | | |
| | Foreign Collaborations, if any | NIL | | |
| | Professional Society Memberships | Not Applicable | | |
| | Professional activities | Not Applicable | | |
| | Consultancy activities | Not Applicable | | |
| | Grants fetched | NIL | | |
| | Departmental Achievements | Not Applicable | | |
| | Distinguished Alumni | Not Applicable | | |

| | | | | |
|----|-------------------------------------------------|-----------------------------------------------------------------------------------|------------------|------------------|
| 12 | (F) Name of the Department | Master in Business Administration (M.B.A.) | | |
| | Course | M.B.A. | | |
| | Level | PG | | |
| | 1 st Year of approval by the Council | 2007 | | |
| | | 2009-2010 | 2008-2009 | 2007-2008 |
| | Year wise sanctioned Intake | 60 | 60 | 60 |
| | Year wise Actual Admissions | 60 | 60 | 60 |
| | Cut of marks- General quota | 50% | 60% | 60% |
| | % Students passed with Distinction | NIL | | |
| | % Students passed with First Class | 89.58 | | |
| | Students Placed | 38 | | |
| | Average Pay package, Rs./Year | Rs. 3,00,000/- | | |
| | Students opted for Higher Studies | 7 | | |
| | Accreditation Status of the course | Accredited/ Provisionally Accredited/ Non Accredited/ Not eligible yet | | |
| | Doctoral Course | YES / NO | | |
| | Foreign Collaborations, if any | NIL | | |
| | Professional Society Memberships | Not Applicable | | |
| | Professional activities | Not Applicable | | |
| | Consultancy activities | Not Applicable | | |
| | Grants fetched | NIL | | |
| | Departmental Achievements | Not Applicable | | |
| | Distinguished Alumni | Not Applicable | | |
| 12 | (G) Name of the Department | Master in Computer Application (M.C.A.) | | |
| | Course | M.C.A. | | |
| | Level | PG | | |
| | 1 st Year of approval by the Council | 2008 | | |
| | | 2009-2010 | 2008-2009 | 2007-2008 |
| | Year wise sanctioned Intake | 60 | 60 | -- |
| | Year wise Actual Admissions | 30 | 40 | -- |
| | Cut of marks- General quota | 50% | 60% | -- |
| | % Students passed with Distinction | Not Applicable (Final Year of First Batch is in process) | | |
| | % Students passed with First Class | Not Applicable (Final Year of First Batch is in process) | | |
| | Students Placed | Not Applicable | | |
| | Average Pay package, Rs./Year | Not Applicable | | |
| | Students opted for Higher Studies | Not Applicable (Final Year of First Batch is in process) | | |
| | Accreditation Status of the course | Accredited/ Provisionally Accredited/ Non Accredited/ Not eligible yet | | |
| | Doctoral Course | YES/ NO | | |
| | Foreign Collaborations, if any | NIL | | |
| | Professional Society Memberships | Not Applicable | | |

| | |
|---------------------------|----------------|
| Professional activities | Not Applicable |
| Consultancy activities | Not Applicable |
| Grants fetched | NIL |
| Departmental Achievements | Not Applicable |
| Distinguished Alumni | Not Applicable |

| | | |
|----|-------------------------------------|---------------------------------------------------------|
| 13 | Name of Teaching Staff* | Faculty Profile as on Annexure – 1 |
| 14 | Admission Quota | 85% of UPTU and 15% Management Quota |
| | Entrance test/ admission criteria | UPSEE/AIEEEE/As per UPTU Norms |
| | Cutt off / last candidate admitted | As per UPTU Norms |
| | Fees in rupees | Rs. 75000/- (As per Hon'ble Allahabad High Court order) |
| | Number of fee Waivers offered | N.A. |
| | Admission Calendar | As per U.P. Technical University guidelines. |
| | PIO quota | NO |
| 15 | Infrastructural information | |
| | Classroom/ Tutorial Room facilities | YES, Class Rooms: 32, Tutorial: 11 |
| | Laboratory details | |
| | Computer Centre facilities | |

LABORATORY & COMPUTER CENTRE FACILITIES DETAILS

| <i>S. No</i> | <i>Labs</i> | <i>Major Equipments</i> |
|--------------|--------------------------------------------------------------------------------------------|---------------------------------------------------------------------------------------------------------------------------------------------------------------------------------------------------------------------------------------------------------------------------------------------------------------------------------------------------------------------------------------------------------------------------------------------------------------------------------------------------------------------------------------------------------------------------------------------------------------------------------------------------------------------------------------------------------------------------------------------------------------------------------------------------------------------------------------------------------------------------------------------------------|
| 1 | Computer Lab. (B. Tech.) | Server, Computers, Printers, Scanner & Licensed Software etc. |
| 2 | Mechanical Engineering Lab & Workshop | Lathes, Vertical Drill, Power Hacksaw, Models of CI, SI, Steam Engine, Boilers, UTM, BHTM and Impact Test Machine. |
| 3 | Electrical Engineering Lab | D. C. Motor, Transformer, 3 Phase Squirrel Cage Induction Motor, Power Converter. |
| 4 | Physics Lab | Spectrometer, Polarimeter, Traveling Microscope etc. |
| 5 | Chemistry Lab | Oven, D.M. Plant, Distillation Plant, Water Bath etc. |
| 6 | Material Science & Testing Lab / Mechanical Engineering Lab Manufacturing Science-I Lab | Making a plastic mould for small metallic specimen, Specimen preparation for micro structural examination-cutting, grinding, polishing, etching, Grain Size determination of a given specimen, Comparative study of microstructures of different given specimens (mild steel, gray C.I., brass, cooper etc.), Study of corrosion and its effects., Study of microstructure of welded component and HAZ. Macro & Micro examination, Strength testing of a given mild steel specimen on UTM with full details and s-eplo on the machine, Other tests such a shear, bend tests on UTM., Spring index testing on spring testing machine., Creep testing on creep testing machine., Deflection of beam experiment, comparison of actual measurement of deflection with dial gauge to the calculated one, and or evaluation of young's modulus of beam., Torsion testing of a rod on torsion testing machine. |

| | | |
|----|----------------------------------------------------------------------------|------------------------------------------------------------------------------------------------------------------------------------------------------------------------------------------------------------------------------------------------------------------------------------------------------------------------------------------------------------------------------------------------------------------------------------------------------------------------------------------------------------------------------------------------|
| 7 | Fluid Mechanics & Applied Thermodynamics Lab | Surface Tension Measuring Apparatus, Metacentric Height Apparatus, Bernoulli's Theorem apparatus, Reynold's apparatus, Flow through orifice & mouth piece, Discharge over notches, Losses due to friction in pipelines, Darcy's Law apparatus, Losses due to pipe fittings, Sudden enlargement & contraction, Demonstration model of ignition system IC Engine, Metallurgical polishing machine-double disc, Heat treatment furnace, Inclined metallurgical microscope-binocular module, Spring testing machine, Deflection of Beam Apparatus. |
| 8 | Professional Communication Lab | Server, Computers, Printers, Scanner & Licensed Software etc. |
| | Mini Project Lab/ Information System Lab / Software Project Management Lab | Server, Computers, Printers, Scanner & Licensed Software etc. |
| 9 | Electronics Engineering Labs | Digital Multimeters, IC testers, Digital Trainer Kits, Decade Boxes, Induction Boxes, LCR Bridge, Transient Tester, Kelvin Double bridge, Distortion factor meter, CRO, Trainer Kits, Monoshot Multivibrators, Function generators. |
| 10 | Dynamics of Machine/ Fluid Machinery Lab | Cam Analysis Apparatus, stroboscope for Cam Analysis, Digital Tachometer, Universal Governor Apparatus, Whirling of Shaft Apparatus, Motorized Gyroscope, Static and Dynamic Balance Apparatus. |
| | Manufacturing Science-II/ Refrigeration & Air Conditioning Lab | Making a mould (with core) and casting, Sand testing (at least one such as grain fineness number determination), Injection Moulding with plastics, Tube bending with the use of sand and on tube bending m/c., Press work experiment such as blanking / piecing, washer, making etc., Wire drawing / extrusion on soft material., Rolling-experiment., Bending & spring back. |
| 11 | Heat & Mass Transfer Lab | Composite Wall Apparatus, Lagged Pipe Apparatus, Natural Convection Apparatus, Heat Pipe Apparatus, PIN FIN Apparatus, Stefan Boltzmann Apparatus, Emissivity Measurement Apparatus, Parallel Flow / Counter Flow Heat Exchanger, Thermal Conductivity of Guarded Hot Plate Method. |
| | Measurement, Metrology & Control/ Machine Drawing-II Lab | Study & working of simple measuring instruments. Like vernier calipers, micrometer, tachometer etc., Measurement of angle using sinebar & slip gauges., Study & angular measurement using bevel protector, Adjustment of spark plug gap using feeler gauges., Pressure measuring experiment., Temperature measurement experiment., Strain gauge measurement., Study of limit gauges. |
| 12 | Analog Integrated Circuits/ Digital Signal Processing Lab | A, AB & B Push-Pull Amplifier Trainer, RC Coupled Amplifier Trainer, Darlington Transistor Amplifier Trainer, OP-Amp as a Instrument Amplifier Trainer, Emitter Follower Trainer, CRO (20 MHz) with DMM, Function Generator, Power Supply (0-30 V), V-I Characteristic of Junction Diode Trainer, V-I Characteristic of Zener Diode Trainer, Transistor characteristics Trainer, FET Characteristics Trainer, Common Base Transistor Characteristics Trainer |
| | Microprocessor Lab/ Microwave Lab | 8085-Microprocessor training kit, 8086-Microprocessor training kit, Peripheral study card 8255, 8253, 8279, 8251, 8259, 8257, Interfacing module DAC, ADC, LC |
| | Energy Conversion/ Electrical Machine Lab | M-G Set (2 H.P. D.C. shunt motor – 1 K.W. D.C. compound generator), M-G Set (2 H.P. D.C. shunt motor – 1 K.W. D.C. Shunt generator), M-G Set (2 H.P. D.C. shunt motor – 1 K.W. D.C. Series generator), M-G Set (3 H.P. Synchronous motor – 1.5 K.W. Shunt generator), 3 Phase, 1.5 H.P., |

| | | |
|----|-------------------------------------------------------------------------|-----------------------------------------------------------------------------------------------------------------------------------------------------------------------------------------------------------------------------------------------------------------------------------------------------------------------------------------------------------------------------------------------------------------------------------------------------------------------------------------------------------------------------------------------------------------------------------------------------------------------------------------------------------------------------------------------------------------------------------------------------------------------------------------------------------------------------------------------------------------------------------------------------------------------------------------------------------------------------------------------------------------------------------------------------------------------------------------------------------------------------------------------------------------------------------------------------------------------------------------------------------------------------------------------------------------------------------------------------------------------------------------------------------------------------------------------------------------|
| | | <p>Induction Motor (With load arrangement), 3 Phase, 2 H.P., Induction Motor (With load arrangement), 1-Phase, 1 H.P., Induction Motor (With load arrangement), 2 H.P. D.C. Shunt motor(With load arrangement), 2 H.P. D.C. Series motor(With load arrangement), Panel for study of 1-phase half controlled bridge converter, Panel for 1- Phase capacitor motor, Panel for MOSFET based chopper motor controller, Panel for load test on D.C. Motor- shunt, Panel for no load and block rotor test on 3- phase induction motor, Panel for load characteristics of D.C. shunt generator, Panel for load characteristics of D.C. series generator, Panel for 1- phase transformer – sumpner test, Panel for speed control of 3-phase induction motor through A.C. drive, Panel for load test on 3-phase induction motor, Panel for M-G set: AC synchronous motor/DC generator, Panel for load characteristics of DC compound generator, Panel for load test on DC motor Series, Panel for parallel operation of DC shunt generator, Panel for load characteristics of Dc shunt generator</p> <p>1-phase lamp load (2KW), UJT triggering circuit kit, SCR characteristic kit, Rheostat (260 ohm,1.4 A), Wattmeter (1pf,2.5/5 A,150/300/600 V), Wattmeter (LPF, 5/10A,75/150/300 V), 1-phase auto transformer, 1-phase transformer,1 KVA, 3-phase autotransformer, DC rectifier supply(50A), Digital multimeter, Tachometer(Non contact type), Universal motor</p> |
| | Communication Lab-I / Communication Lab-II | <p>AM using Transistor & Determine Depth of Modulation Trainer, Envelop Detector for demodulation of AM Trainer, FM using reactance modulator trainer, FM using varactor modulator trainer, Narrow band FM generator using Armstrong method trainer, Foster Selly discriminator trainer, DSB-SC signal using balance modulator trainer, Single side band Trainer, Cathode ray oscilloscopes, 30 MHz, Function Generators, 10 MHz Sine 2MHz rest, Power Supplies</p> |
| 13 | Network Lab | <p>N/W Theorem Trainer Kit, Ladder N/W Trainer Kit, Reciprocity Theorem Trainer Kit, Superposition Theorem Trainer Kit, Teligens Theorem Trainer Kit, T & π N/W Trainer Kit, Z,Y & H Parameter Trainer Kit</p> |
| | Digital Electronics Lab / Computer Organization Lab | <p>Digital Trainers, CRO (20 MHz), DMM, ADD/SUB Trainer, Monoshot Multivibrator Trainer, Almirah Large</p> |
| 14 | Electronics-I/Electronics-II Lab / Instrumentation & Mess Lab | <p>AF Signal Generator, Function Generator, CRO (20 MHz.), Output Power meter, RTD Type J&K Type Pressure Transducer, Study of LCR Bridge Trainer, Transistor Tester Trainer</p> |
| | Electronics Workshop & PCB Lab/Electronics CAD Lab | <p>PCB Curing Machine, PCB Drilling Machine, PCB Shearing Machine, Dye Developer Machine, Etching Machine, Dip coating Machine, U V Exposure Unit, Film making unit</p> |
| 15 | E-Commerce Lab/Computer Graphics Lab. /Artificial Intelligence Lab | <p>Server, Computers, Printers, Scanner & Licensed Software etc.</p> |
| | Java Programming Lab / DAA / Compiler Design / Software Engineering Lab | <p>Server, Computers, Printers, Scanner & Licensed Software etc.</p> |
| | Numerical Technique Lab/ Data Structure Lab./ Network Lab | <p>Server, Computers, Printers, Scanner & Licensed Software etc.</p> |
| | DBMS Lab / Web Tech. Lab./ Operating System Lab | <p>Server, Computers, Printers, Scanner & Licensed Software etc.</p> |
| 16 | Computer Lab (M.B.A.) | <p>Server, Computers, Printers, Scanner & Licensed Software etc.</p> |
| 17 | Computer Lab (M.C.A.) | <p>Server, Computers, Printers, Scanner & Licensed Software etc.</p> |

| | | |
|----|--------------------------|------------------------------------------------------------------------------------------------------------------------------------------------------------------|
| 18 | Communication Lab. – III | Optical Fiber Trainer Kit, Optical Power Meter, TDM Pulse Amplitude Modulation/Demodulation Trainer kit, CRP (30MHz), 2CH with CT, Function generators, MAT Lab. |
|----|--------------------------|------------------------------------------------------------------------------------------------------------------------------------------------------------------|

| | |
|--------------------------------------------|-------------------------------------------------------------------------|
| Library facilities | Number of titles : 2411 |
| | Numbers of volumes : 18550 |
| | Journals : 123 |
| | Online National/International Journals subscribed is in Progress |
| | E-Library facilities is available |
| Auditorium / Seminar Halls/ Amphi | YES |
| Cafeteria | YES |
| Indoor Sports facilities | YES |
| Outdoor Sports facilities | YES |
| Gymnasium facilities | YES |
| Facilities for disabled | YES |
| Any other facilities | YES |
| 16 Boys Hostel | YES 300 Students |
| Girls Hostel | YES 150 Students |
| Medical & other Facilities at Hostel | YES |
| 17 Academic Sessions | As per U.P. Technical University, Lucknow |
| Examination system, Year/ Sem. | As per U.P. Technical University, Lucknow |
| Period of declaration of results | As per U.P. Technical University, Lucknow |
| 18 Counseling / Mentoring | |
| Career Counseling | YES |
| Medical facilities | YES |
| Student Insurance | YES |
| 19 Students Activity Body | YES |
| Cultural activities | YES |
| Sports activates | YES |
| Literary activities | YES |
| Magazine / Newsletter | YES |
| Technical activities / TechFest | YES |
| Industrial Visits / Tours | YES |
| Alumni activities | YES |
| 20 Name of the Information Officer for RTI | Mr. A.C. Sharma |
| Designation | Registrar |
| Phone number with STD code | 0120-2328235 |
| FAX number with STD code | 0120-2320355 |
| Email | registrar@accurate.in |